



High Strength Glass-Ceramics Fabricated With Coal Gangue as Main Raw Materials



Chen P*

Department of Material Science and Engineering, Shaanxi University of Science and Technology, China

*Corresponding author: Chen P, College of Material Science and Engineering, Shaanxi University of Science and Technology, Xi'an, Shaanxi, China (710021)

Submission: November 09, 2017 Published: April 13, 2018

Abstract

High strength glass-ceramics were fabricated with coal gangue as main raw material. The effects of the utilization rate of the coal gangue, mineral additives, mineralization agents, forming process, and sintering process on the properties of the glass-ceramics were studied. The optimal utilization rate of coal gangue is 55 wt% when the utilization rate of another mineral material bauxite is 35 wt%. The glass-ceramics showed a main crystal phase of mullite. BaCO_3 and MnCO_3 codoping and cosubstitution as mineralization agents obviously enhanced the properties of the glass-ceramics. The strength of 148.36-156.12 MPa, water absorption of 0.17-0.02%, and density of 2.66-2.68g/cm³ were achieved for the glass-ceramics. By optimization experiments, reasonable and optimal processing parameters of forming and sintering were also determined.

Keywords: Coal gangue; Glass-Ceramics; Process optimization; Mechanics property

Introduction

Glass-ceramics are attractive materials used in various applications, such as building materials, cooking ceramics, machinable ceramics, bio-ceramics, optical materials, etc [1,2]. High strength and lightweight are first requirement for some applications. From a point of raw material, utilizing the industrial solid wastes with high contents of silica and alumina is a main direction of developing the glass-ceramics because of low cost and high product performance.

Since the main constituents of glass-ceramics are SiO_2 , Al_2O_3 , CaO and/or MgO , many inorganic wastes are potential starting materials. Currently, various wastes have been used, such as, slags, coal ash, incinerator ash, and waste glass, and shell, oil shale ash and phosphorous fertilizer. Coal gangue as a type of industrial solid waste is widely used to produce cement [3], ceramics [4,5], refractory brick [6], zeolite [7], lightweight aggregate [8], and so on. A very large amount of the coal gangue is produced in coal production. The amount produced in china is reached above several million tones, and increases about one millions tones per year.

Table 1: The composition of the raw materials (wt %).

Raw Material	SiO_2	Al_2O_3	CaO	MgO	Fe_2O_3	TiO_2	K_2O	Na_2O	Ingition Loss
Coal gangue	62.5	20.8	2.12	4.83	3.14	0.83	3.12	3.17	0.7
bauxite	7.25	76.25	1	1	1.5	1.5	0	0	11.5
clay	41.03	37.71	2.66	0.46	0.14	0.14	0.68	0.54	14.18
limestone	1.51	0	55.28	0	0	0	0	0	43.22
steatite	62.82	1.03	2.06	31.93	0.1	0	0	0	2.06

However, the comprehensive utilization rate of the coal gangue is limited. To prevent air and river from pollution and save resource, the efficient management and full utilization of the coal gangue are urgent. The coal gangue has a high alumina content of ~30 wt% and a high silica content of ~62 wt%, and so is suitable for fabrication of the high strength glass-ceramics. In this work, we report the fabrication and the property of the glass-ceramics with the coal gangue as a main raw material.

Experimental Procedure

The coal gangue was used as main raw materials. Bauxite was used to increase the alumina content in the glass-ceramics. Clay was used as an adhesive and to improve formability of slurry. In addition, small amounts of steatite and limestone were used as additives; and BaCO_3 , MnCO_3 , and MgCO_3 were used as mineralizers. The sodium tripolyphosphate (STPP) and methyl cellulose (CMC) was used as a water reducer to decrease viscosity of the slurry. The chemical composition of the raw materials is listed in Table 1.

Table 2: The basic prescriptions of samples (wt %).

No.	Coal Gangue	Bauxite	Clay	Steatite	Limestone
1 [#]	60	30	5	3	2
2 [#]	55	35	5	3	2
3 [#]	50	40	5	3	2
4 [#]	45	45	5	3	2
5 [#]	40	50	5	3	2

Mullite ($\text{Al}_6\text{Si}_2\text{O}_{13}$) generally has high strength and so was designed as main crystal phase. Combine with utilization rate of the coal gangue; the basic prescriptions were designed as listed in Table 2.

Typical processes for fabrication of the glass-ceramics are mentioned below: the raw materials were first mixed according to the designed prescriptions. The mixtures were filtered through 10 mesh, wet-milled at ratio of raw materials: ball: water=1: 2.5: (0.3-0.5) for 15-25min and then filtered through 120 mesh (Aparture: 0.045mm, ASTM). Subsequently, as treated raw materials were dried at 50-70 °C for 3-5h, the each of the dried samples with a weight of ~200g were taken, and 5g STPP and 5g CMC were added into each sample. By further ball-milling with appropriate water for 12 min, the slurry was filtered through 80 mesh (Aparture: 0.180mm, ASTM). Residue on sieve is ~0.1%. After drying at 50-70 °C for 3-5h, the powder was ground and then filtered through 55 mesh (Aparture: 0.280mm, ASTM). The obtained fine powders

were prilled by spraying water and stirring. The prilled grains were filtered through 20 mesh (Aparture: 0.850mm, ASTM). The fine grains under the sieve were re-sprayed with water with constant stirring and then processed to shape required for strength measurement. The formed samples were then pressed at 25-35 MPa and dried at 50-100 °C for 24h. The large grains on the sieve were dried at 80 °C for 4 h. The dried samples and large grains were finally heated at a heating rate of 5-10 °C/ min to 1290-1430 °C and calcined for 30-90min.

The structural phase of the glass-ceramics was identified at room temperature using X-Ray diffractometer (XRD, $\text{CuK}_{\alpha 1}$, $\lambda=0.15406\text{nm}$, Model No. D/Max-2200PC, Rigaku, Japan). The morphology of the glass-ceramics was analyzed by scanning electron microscopy (SEM, Model No: S-570, Japan). The flexural strength of the glass-ceramics was measured by a strength tester (Model No: 401/3, Germany). The water absorbance (A_w) of the grain glass-ceramics was calculated by following equation:

$$A_w = \frac{W_h - W_d}{W_d}$$

Where W_d is weight of appropriate amount of the grains after dried at 110 °C for 3h, W_h is weight of the above dried grains after soaked in water at room temperature for 36h. The density of the grain glass-ceramics (d) was calculated by equation:

$$d = \frac{m_0}{m_1}$$

Where m_0 is mass of the appropriate amount of the grains after drying at 105-110 °C for 3h, m_1 is mass of the grains immersing in water at room temperature.

Results and Discussion

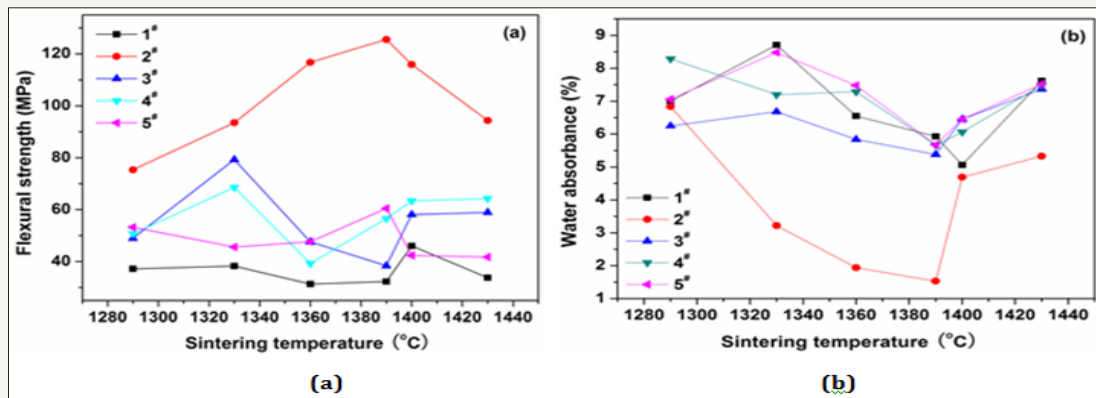


Figure 1: Variations of (a) flexural strength and (b) water absorbance of the glass-ceramics fabricated with basic prescription 1-5[#] with sintering temperature (Sintering time: 30min; milling time: 20min; forming pressure: 30MPa).

Table 3: The prescriptions of samples containing various mineralizers (wt %).

No	Coal Gangue	Bauxite	Clay	Steatite	Limestone	BaCO ₃	MnCO ₃	MgCO ₃
6 [#]	55	35	5	3	2	3	0	0
7 [#]	55	35	5	3	2	0	3	0
8 [#]	55	35	5	3	2	0	0	3
9 [#]	55	35	5	3	2	3	3	0

10 [#]	55	35	5	3	2	3	0	3
11 [#]	55	35	5	3	2	0	3	3
12 [#]	51	33	5	3	2	3	3	-

To select reasonable proportion of the coal gangue, five samples with basic prescriptions (Table 2) were first tested. Figure 1 shows variations of strength and water absorbance of glass-ceramics fabricated with different coal gangue contents as a function of sintering temperature. The glass-ceramics fabricated with prescription 2[#] shown a maximal strength and minimal water absorbance in the sintering temperature range of 1290-1430 °C. Therefore, the prescription 2[#] was further studied by adding various mineralizers. Table 3 lists the new prescriptions. In which, the prescription 12[#] was made up by replacing coal gangue and bauxite with BaCO₃ and MnCO₃. Figure 2-4 illustrate the properties of the glass-ceramics formed at press of 30 MPa and sintered at different temperatures for 30min. BaCO₃ and MnCO₃ codoping (prescription 9[#]) leads to better effects with a minimal water absorption (0.17%), maximal flexural strength (148.36 MPa) and density (2.66g/cm³). Furthermore, the BaCO₃ and MnCO₃ cosubstitution leads to an optimal effect. That is, minimal water absorption (0.02%), maximal flexural strength (156.12 MPa) and density (2.68g/cm³) are achieved. Optimal sintering temperature for these samples is 1360. The chemical compositions of the prescription 9[#] and 12[#] are listed in Table 4.

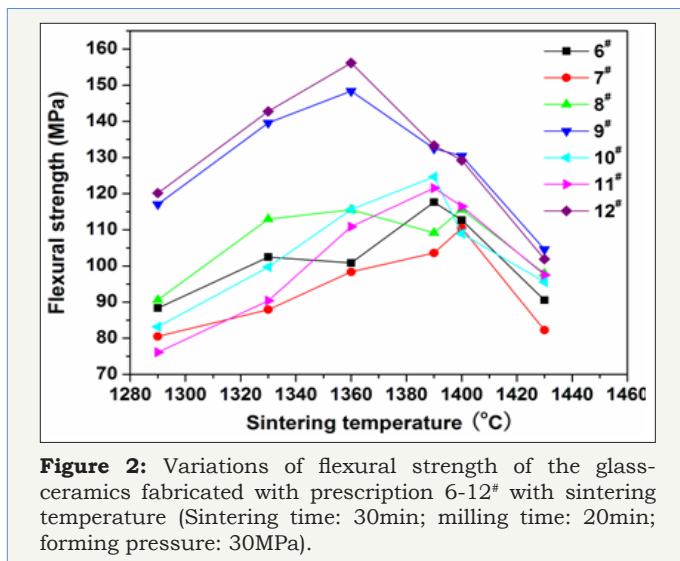


Figure 2: Variations of flexural strength of the glass-ceramics fabricated with prescription 6-12[#] with sintering temperature (Sintering time: 30min; milling time: 20min; forming pressure: 30MPa).

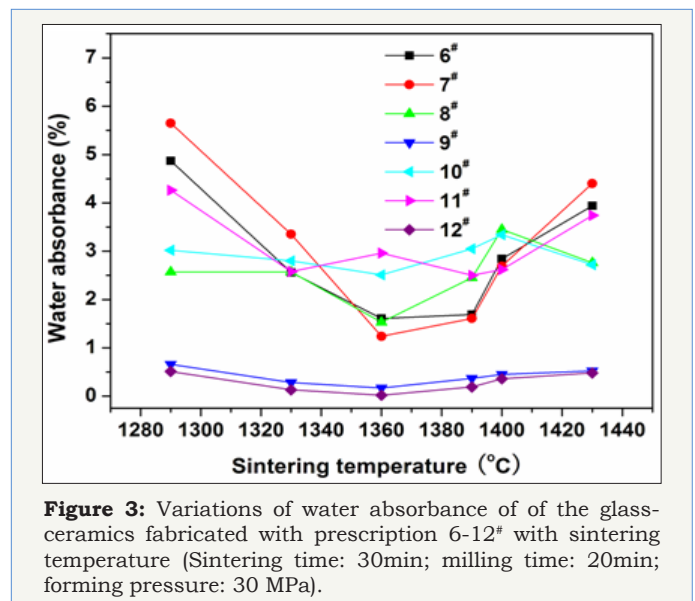


Figure 3: Variations of water absorbance of the glass-ceramics fabricated with prescription 6-12[#] with sintering temperature (Sintering time: 30min; milling time: 20min; forming pressure: 30 MPa).

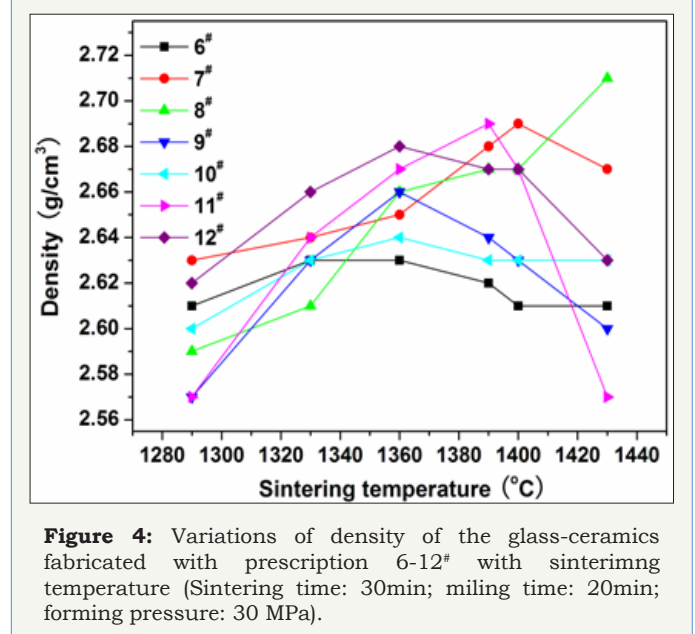


Figure 4: Variations of density of the glass-ceramics fabricated with prescription 6-12[#] with sintering temperature (Sintering time: 30min; milling time: 20min; forming pressure: 30 MPa).

Table 4: Chemical composition of the samples (wt %).

No	SiO ₂	Al ₂ O ₃	CaO	MgO	Fe ₂ O ₃	TiO ₂	K ₂ O	Na ₂ O	MnO ₂	BaO
9 [#]	33.88	53.68	2.02	1.89	0.81	0.86	0.35	0.32	3.19	2.92
12 [#]	33.73	54	2.03	1.76	0.71	0.81	0.25	0.21	3.38	3.1

Figure 5 shows the XRD patterns of the glass-ceramics fabricated with prescription 12[#]. The main crystal phase in the glass-ceramics is identified as mullite (Al₆Si₂O₁₃) (JCPDS: 15-0776). Svyatoslavite (CaAl₂Si₂O₈) (JCPDS: 46-1266) as second phase only exist in glass-ceramics sintered at 1290 °C and 1390 °C. The mullite is generally formed at higher temperature, such as above 1320

°C as reported in previous literature [9]. The formation of mullite in the glass-ceramics at sintering temperature of 1290 °C may be due to fine raw materials, fluxing actions of minerals additives and mineralizers, and nucleation of Fe₂O₃ and TiO₂ existing in the raw materials [10]. The mullite has larger a compressive strength (0.69 GPa) than many other crystals, such as the forsterite (0.55 GPa),

the cordierite (0.32 GPa) and boron nitrate (0.32 GPa) [11], and so can providing high strength for the glass-ceramics. Thus, the glass-ceramics sintered at 1330 °C and 1360 °C show better properties. Furthermore, the XRD peaks are enhanced as increase in sintering temperature from 1330 °C to 1360 °C, and so the glass-ceramics sintered at 1360 °C shows the optimal properties.

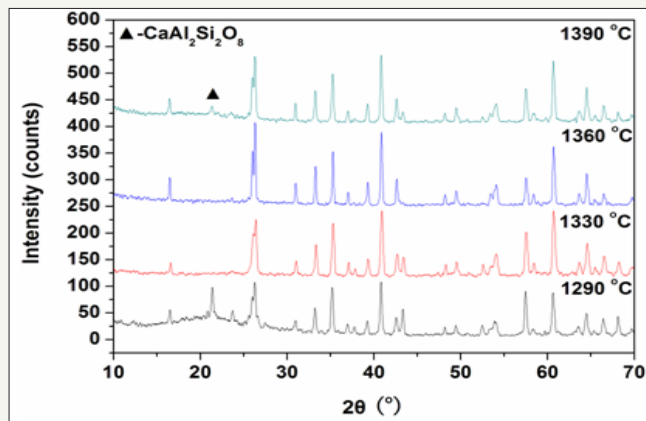


Figure 5: XRD patterns of the glass-ceramics fabricated with prescription 12# at different sintering temperatures for 30min (Milling time: 20min; forming pressure: 30 MPa).

SEM micrographs of the glass-ceramics fabricated with prescription 12# at sintering temperature of 1360 °C are shown in

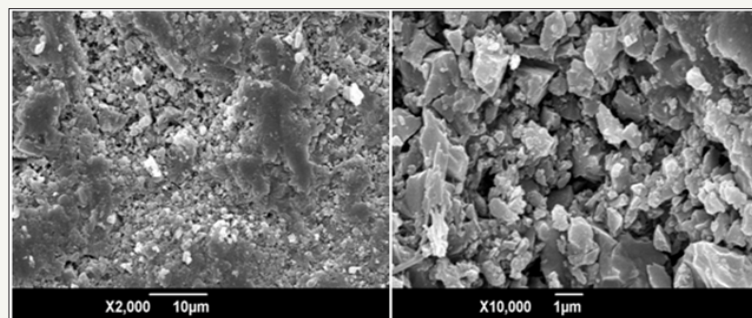


Figure 6: SEM micrographs of the glass-ceramics fabricated with prescription 12# at sintering temperature of 1360°C for 30min (Milling time: 20min; forming pressure: 30 MPa).

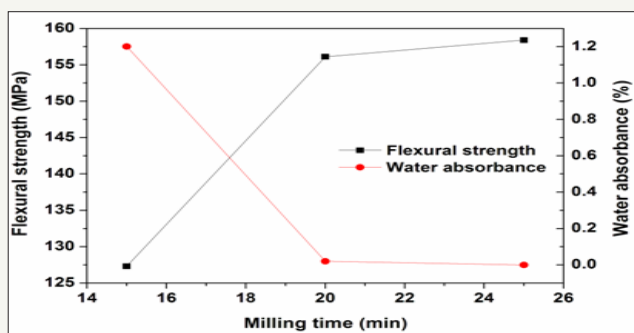


Figure 7: Variations of flexural strength and water absorbance of the glass-ceramics fabricated with prescription 12# at sintering temperature of 1360 °C for 30min with wet-milling time (Forming pressure: 30 MPa).

Figure 6. The glass-ceramics show small and compact crystals with polygonal morphology.

To optimize processing parameter, the prescription 12# was further studied in various processing parameters including milling time, forming pressure, and sintering time. The results are showed in Figure 7-9. The increase of milling time from 15 to 20min leads to great enhancement of the properties, however further increase of milling time only shows slight effect on the properties. Similarly, the increase of forming pressure from 25 to 30min leads to great enhancement of the properties of the glass-ceramics, however further increase of forming pressure only shows slight effect. The increasing sintering time from 30min to 90min only results in slight increase (~1.4 MPa) of flexural strength and slight decrease (0.01%) of water absorbance.

To today, the glass-ceramics prepared with various wastes by many researchers [12-18] generally show a bending strength range of 30-130 MPa [12-16] and the density in the range of ~1.8-3.0g/cm³ [12,13,16-18]. The type, content, size and density of the crystal phases are the determining factors. Moreover, the glass-ceramics prepared in this work contain relative small amounts of alkali metal and alkali earth metal cations (i.e. Na₂O, K₂O, CaO and Mg). This can provide an excellent water-resistance and acid-resistance. Relative high Al₂O₃ content can provide a good alkali-resistance. The mullite crystal phase and low porosity (low water absorption) are also in favour of these chemical stabilities.

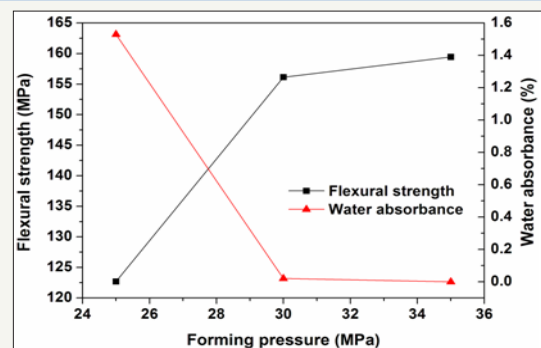


Figure 8: Variations of flexural strength and water absorbance of the glass-ceramics fabricated with prescription 12# at sintering temperature of 1360 °C for 30min with forming pressure (milling time: 20min).

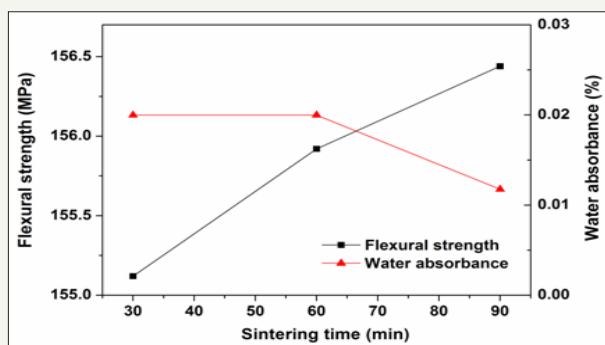


Figure 9: Variations of flexural strength and water absorbance of the glass-ceramics fabricated with prescription 12[#] at sintering temperature of 1360 °C with sintering time (Milling time: 20min; forming pressure: 30 MPa).

Conclusion

The coal gangue as industrial solid waste has been efficiently used to fabricate glass-ceramics. The effects of utilization rate of the coal gangue, mineral additives, mineralizers, processing parameters of forming and sintering of glass-ceramics are studied. The optimum utilization rate of the coal gangue is determined to be 55 wt % when appropriate bauxite, clay, limestone, and steatite are used. The appropriate amounts of mineralizers BaCO₃, MnCO₃, MgCO₃ can improve the property of the glass-ceramics, in which BaCO₃ and MnCO₃ co-doping and co-substitution show an optimal effects as their amounts are 3 wt %, respectively. The process optimization showed that reasonable forming process parameters are milling time of 20min and forming pressure of 30 MPa, while optimal sintering temperature and time are 1360 °C and 30min, respectively. Further increases of the milling time, forming pressure and sintering time only lead to slight enhancements of the properties. In these reasonable process parameters, the glass-ceramics were of high strength (156.12 MPa) and low water absorption (0.02 %) and low density (2.68 g cm⁻³), and so may be a promising lightweight and high strength glass-ceramics for various applications including building materials, cooking ceramics and proppant materials.

References

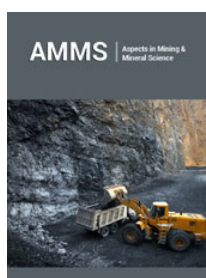
- Patridge G (1994) An overview of glass ceramics. Part 1. Development and principal bulk applications. *Glass Tech* 35(3): 116-126.
- Pannhorst W (1997) Glass ceramics: State-of-the-art. *J Non-Cryst Solids* 219: 198-204.
- Dongxu Li, Xuyan S, Chenchen G, Zhihua P (2006) Research on cementitious behavior and mechanism of pozzolanic cement with coal gangue. *Cem Concr Res* 36(9): 1752-1759.
- Mei Y, Zhixing G, Yinsheng D, Xueling X, Kehui Q, et al. (2012) Preparation of CaO-Al₂O₃-SiO₂ glass ceramics from coal gangue. *Inter J Miner Process* 102(103): 112-115.
- Haipeng Ji, Minghao F, Zhaohui H, Kai C, Youguo Xu, et al. (2013) Effect of La₂O₃ additives on the strength and microstructure of mullite ceramics obtained from coal gangue and γ-Al₂O₃. *Ceram Int* 39(6): 6841-6846.
- Ni W, Gong R, Li C (1997) A study of producing light refractory bricks of mullite by using coal gangues as raw materials. *12(4)*: 79-86.
- Fang F (1997) Synthesis of zeolite ZSM-35 from coal gangue: Shiloh Xebio. *Shiloh Jigging* 13(4): 104-107.
- Jerry GR (1982) Processing and material properties of energy-efficient sintered coal refuse lightweight aggregate, *Resources and Conservation*. 9: 119-129.
- Imanaka Y, Aoki S, Camshare N, Nina K (1995) Cristobalite phase formation in glass/ceramic composites. *J Am Ceram Soc* 78(5): 1265-1271.
- He HY (1999) Thermodynamic study of nucleation property of nucleation agent. *J Wuhan Univ Technol Mater Sci* 14: 28-34.
- Jones AH, Cutler RA (1980) Light weight proppant for deep gas well stimulation. *Terra Tek, USA*.
- Bernardo E, Esposito L, Rambaldi E, Tucci A, Pontikes Y, et al. (2009) Sintered esseneite-wollastonite-plagioclase glass-ceramics from vitrified waste. *J Europ Ceram Soc* 29(14): 2921-2927.
- Tomohiro T, Yoshihiro T, Yoshikazu K, Kiyoshi O (2004) Preparation and properties of CaO-MgO-Al₂O₃-SiO₂ glass-ceramics from kao- lin clay refining waste (Kira) and dolomite. *Ceram Int* 30(6): 983- 989.
- Liu HY, Lu HX, Chen DL, Wang HL, Xu HL (2009) Preparation and properties of glass-ceramics derived from blast-furnace slag by a ceramic-sinter-ing process. *Ceram Int* 35(8): 3181-3184.
- Bernardo E, Castellan R, Hreglich S (2007) Sintered glass-ceramics from mixtures of wastes *Ceram Int* 33(1): 27-33.
- Young JP , Jong H (2002) Vitrification of fly ash from municipal solid waste incinerator. *J Hazard Mater* 91(1-3): 83-93.
- Shu DL (2004) Mechanical Property of Enginerring Materials, China Machine Press, Beijing, China, pp. 214-228.
- Beck WR, Castle RB (1985) Proppant for well fractures and method of making same, US 4493875.



Creative Commons Attribution 4.0 International License

For possible submissions Click Here

[Submit Article](#)



Aspects in Mining & Mineral Science

Benefits of Publishing with us

- High-level peer review and editorial services
- Freely accessible online immediately upon publication
- Authors retain the copyright to their work
- Licensing it under a Creative Commons license
- Visibility through different online platforms